

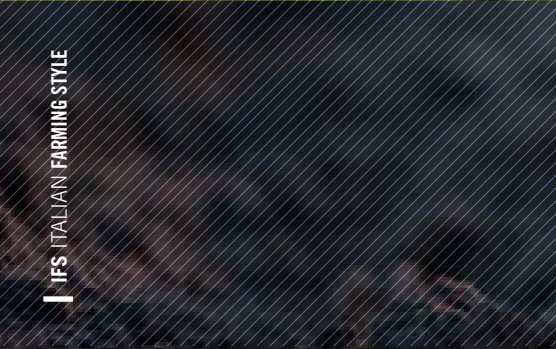


ITALIAN FARMING *STYLE*

From the stable *to* the table



Mission



+ Mission

Our goal is to transfer Italian Technology to train the farmers of the future. We want to join agronomy, zootechnic, food technology and renewable energies to obtain an integrated, self sufficient and profitable farm.

50 years of experience at Your Service

Vision



+ Vision

Our vision is based on 3 key pillars through which we want to contribute to the development of the agro-zootechnical sector:

1. Design

Our projects take into consideration all the variables that define the context. The final result is a perfect match of customer's demands, supplier's experience and full reliability of the performances.

2. Quality

We develop reliable, strong and easy-to-use systems from the point of view of the farmer that will use them.

3. Sustainability

Preserving the environment for the generations to come. This means acting as a company in a responsible way, putting the animal, the farmer and the environment at the center of what we do.



Our core values



Innovation

We think out-of-the box and seek opportunities for innovation, aiming for a positive change to shape a better future for man and animal.



Passion

We are passionate about what we do, committed to the future of the agro-zootecnical sector in heart and mind.



Respect

Well-being of man and animal as well as the environment are at the heart of our company. We are constantly seeking more sustainable alternatives.



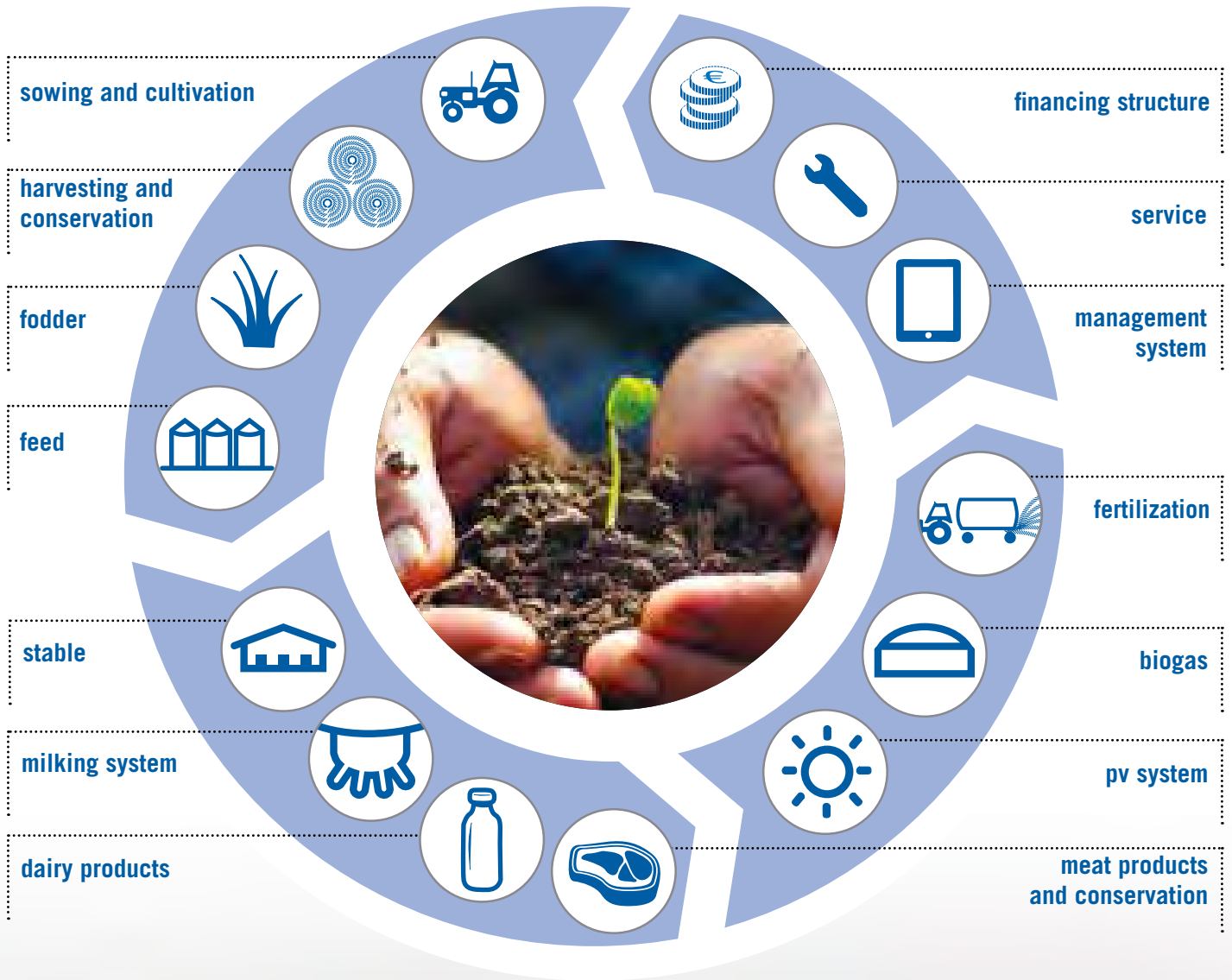
Honesty

We endeavour to live up to our promises; **say what we do, do what we say**.

From the stable

The wellness ring:

● from the field to the table



to the table

Sowing and cultivation

PLOWING

SEEDING

IRRIGATION



+ Sowing and cultivation

The distinguishing feature which over the years has made the difference is the creation of a strong connection between the various technical means used in the process which initiates an organic productive cycle: starting from the cultivation of forage crops and proceeding through the harvesting, conservation and nutritional use of those crops, and finally in the cowshed, improving the efficiency of the herd management.



Harvesting and conservation

CORN
FODDER



+ Harvesting and conservation

Dairy farming of tomorrow: we offer a range of products designed to satisfy farmers and livestock breeders in all the activities connected with running a farming and livestock business. The distinguishing feature which over the years has made the difference is the creation of a strong connection between the various technical means used in the process which initiates an organic productive cycle: starting from the cultivation of forage crops and proceeding through the harvesting, conservation and nutritional use of those crops, and finally in the cowshed, improving the efficiency of the herd management.



Storage and Mill



+ Storage and Mill

Our technical division enables it to tackle and solve numerous problems connected with storage, batching, mixing, mechanical and pneumatic transfer, and other operations involving various granular and powdered materials. The high quality materials used, are systematically submitted to process controls, both while entering and exiting the warehouse.

Machines, structures and connection elements are subject to accurate anti-corrosion treatments such as hot galvanization and epoxy powders painting, to guarantee its longest duration. The choice of materials and working processes is oriented around respect for the environment.



Feed and distribution

FEED PROGRAM

SPECIFIC NUTRITION



IFS ITALIAN FARMING STYLE



+ Feed and distribution

We provide an innovative working method, which supports the livestock farmer in making the best choices to achieve equilibrium between productivity and animal welfare to obtain maximum profitability from the herd.



Cattle Breeding



+ Cattle Breeding

The stable functionality is conditioned by the correct integration of the structure with the various equipments and the relative mechanizations. The choice of the correct equipment, once the typology of the cowshed has been decided, becomes the conditioning element of its rationality.

Our engineers design the ideal stable according to the situation: soil and climate conditions, type of breed chosen, level of management experience, farmer's objectives, future plans of development, level of mechanization required.





The correct use of our products always grants:

- the best health-sanitary conditions of the breeding;
- the best productive performances;
- the most favourable microclimatic conditions and quality of air;
- convenient treatment of the farm waste;
- nitrogen reduction in obedience to the environmental rules;
- easy organisation of the work and all the various operations of keeping, control and management of the zootechnic centre.



Fattening herd

FATTENING HERD
COW-CALF LINE



10 IFS ITALIAN FARMING STYLE

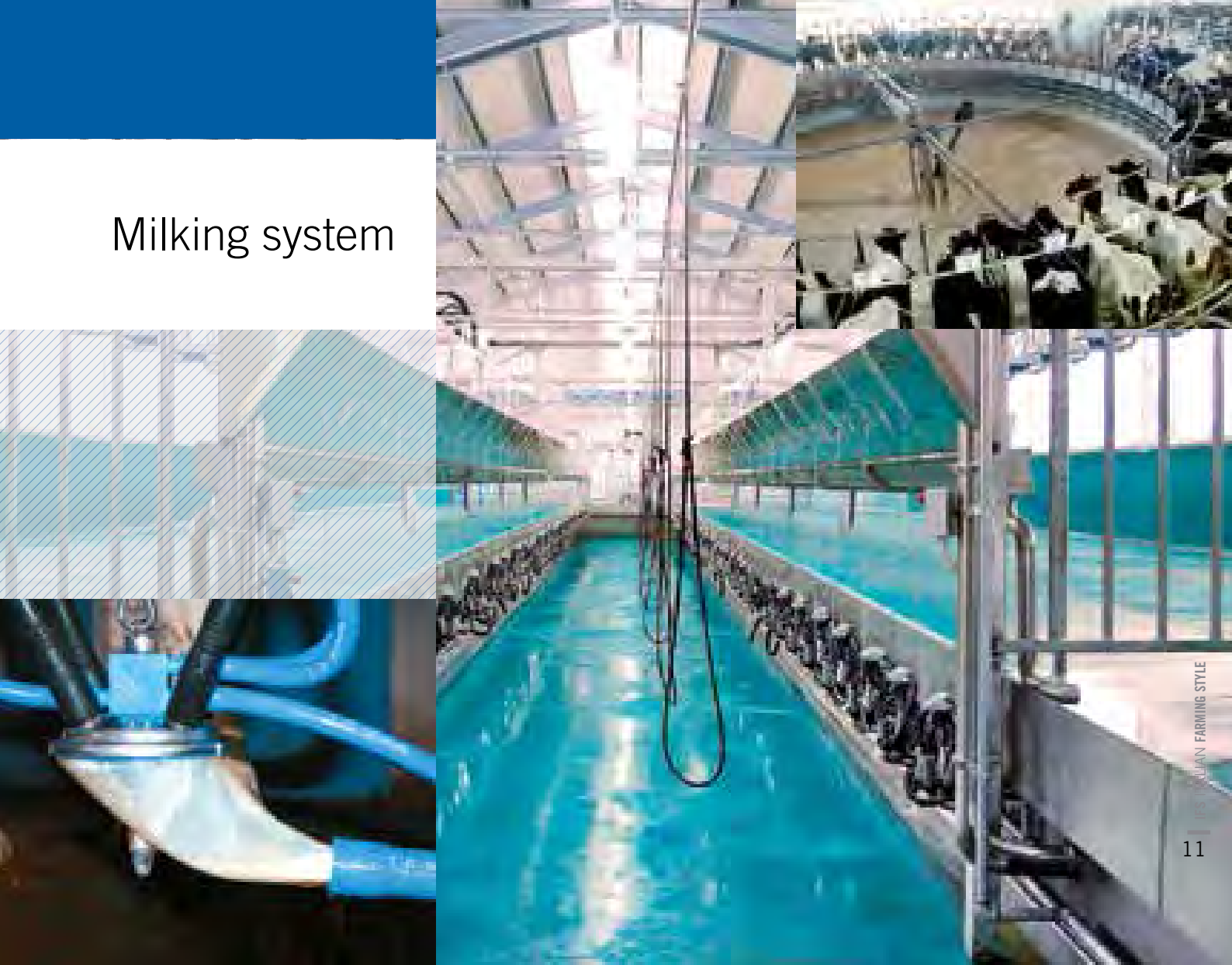


+ Fattening herd

Whether you want to produce milk, meat or both we can always find the most appropriate zotechnical solution to support the breeder in obtaining maximum results in animal well-being, environmental impact and business returns.



Milking system



11 | IFS | SUSTAIN FARMING STYLE



+ Milking and herd management

Our team designs high technological milking systems content and cooperates with qualified livestock experts zoo-technicals, including nutritionists and veterinarian, to well understand and share daily management issues of the herd and analyze the collected data, in order to take decisions which look to the future of the farm, because only through a process of continuous improvement it is possible to grow.



Dairy Products



+ Milking System

Only a good dairyman knows well what the final product looks like and understands how important to be supported daily by our fine technologies to carry out and manage his work.

Our greatest credentials come from the fact that a good part of our new contracts come from satisfied returning customers who want to either enlarge their capacity of production or update their equipment.

Our passion for dairy farming and our knowledge of the technologies push us to researching and designing the best solutions possible to increase the quality of the processing technologies, but also to provide proper technical training for a better use of the machines and a constant assistance available.





+ Dairy Products

The knowledge of the technological principles fundamental of the dairy production and the deep respect for diversity and specificity of product, ambient conditions and competitive scenarios, makes our team the best partner to develop your dairy plant.

For our vision is essential to design “in green”: all processes are thought through

for a low impact on the environment, from engineering to production, to the logistic. The plants are automated on request and supervised and monitored in remote control.



Meat products and conservations



+ Meat products and conservations

Understanding local need of each market and in respecting the real requests of operators. A particular attention has been addressed to the improvement of traditional slaughtering methods up to develop the design and the production of specific equipment for Halal & Kosher slaughtering in fully compliance with Islamic and Jewish Laws relating to ritual killing.





.....
Able to comply with worldwide specific needs with professionalism, seriousness and promptness in fully accordance with CEE and USDA laws and with International health and Safety Regulations.



PV System



+ PV System

Based on the solar effect, photovoltaic energy exploits the physical properties of certain semiconductor materials allowing the conversion of energy originating from solar radiation into electrical energy.

The absence of moving mechanical parts markedly increases the reliability of the entire system, noticeably reducing maintenance operations, producing lower-cost, silent and clean energy (no scrap materials are produced during normal plant operation).

The conversion into electrical energy of electromagnetic waves





.....
irradiated by the Sun towards the Earth is based on the photoelectric effect, that is, on the ability of certain semiconductors to generate continuous electric current if exposed to sunlight.



Biogas



18 IFS ITALIAN FARMING STYLE



+ Biogas

The anaerobic digestion is a complex biological process through which an organic substance contained in an environment with little or no oxygen is turned into biogas or biological gas. This gas is composed of methane and carbon dioxide. The percentage of methane varies from a minimum of 50% to a maximum of approx. 80%, depending on the type of digested substance and on the environment conditions. In order for the process to be successful, different types of organisms must break the





.....
matter down into smaller molecules from which the methanogenic organisms produce methane and thus finalize the whole fermentation process.
The advantage of this process is that the complex organic matter produces a renewable energy in form of gas fuel with a high heating value.



Spreading on soil

MANURE AND IRRIGATION



+ Spreading on soil

The manure and fermentation residues are natural substances. This valuable nutritious substance, rich in trace elements, becomes more important with the increasing of costs of artificial fertilizers, which are linked to oil prices. The advantageous employ and the correct





.....
use of a natural fertilizer like the manure requires the adoption of precise, clean and low-emission spreading systems, to avoid unpleasant odors even in the hardest conditions.



Integrated planning



+ Integrated planning

First of all, the starting point must be an analysis of the site's conditions, that is an evaluation of the microclimatic conditions in which the project is included, then the evaluation must involve the customer's requirements, to plan a further professional growth.

Finally, in order to get the best productive performance, it is necessary to optimize the animal's comfort and increase the efficiency of the operation management, with a proper vision of the budget.



Civil works



+ Civil works

After the designing of the project we are available to carry out all the necessary activities to make sure that our structures are based on strong foundations.

The buildings (barns, stalls, milk/cheese factory, slaughterhouse, biogas plant, storage facilities) and the surrounding areas are an essential part for a long lasting efficient activity.



Management

INSTRUCTIVE
TRAINING

ADVISORY



+ Management

Training and is the most important part, as the human factor gives more value to the systems in use.

Our training includes a theoretical section to be held in Italy, sometimes in collaboration with leading Italian Universities, and an on-the-job section to be carried out on site with the support of our technicians.

It includes:

- Forages cultivations;
- Corn farming;
- Animal feed;





-
- Calf management;
 - Heifer management;
 - Dry cattle management;
 - Transaction: passage from dry period to milking period;
 - Heat detection;
 - Milking management;
 - Forage storage;
 - Raw material and concentrate management;
 - Nutritional integration;
 - Milking system management - udder - foot - cubicle;
 - Food technology, processing and conservation (dairy and meat productions);
 - Biogas technology management;
 - PV technology management.



Service

MAINTENANCE

SUPERVISION

SPARE PARTS



+ Service

For maximum customer's satisfaction we provide:

- Immediate reply for a proper identification of the demands;
- Aptitude to maintain a short period of plant stop;
- Remote control for the ideal operation of the "Control room", the central station on which an efficient service is created;
- Original spare parts always available on site;





-
- Planned management of a service that includes the ordinary maintenance activities;
 - Customization of the assistance need;
 - More predictability of the operating costs.



ITARE



ITAlian REsources for global markets

+ The Financial Expertise

ITARE means ITAlian REsources, a concept created to support Italian corporates and financial institutions in expanding their presence on global markets.

The team has a long-lasting experience in the insurance and financial sector, focusing on emerging markets and the Sub-Saharan Africa (SSA) region.

With projects closed in 2017 for over €1 billion worth across SSA in the infrastructure, agribusiness and smart technology sectors, ITARE can assist borrowers in arranging funding for their investments, provide risk-mitigation solutions, assist in project execution and implementation in the field.

Rota Guido and ITARE team up to offer the best technical and financial solutions for the development of the agribusiness sector in Africa.





ROTA GUIDO Srl Via F.lli Bandiera 4, 26010 Corte de' Frati CR
Tel. +39 0372 93119 | info@rotaguido.it | www.rotaguido.it



ITARE Srl Via Raffaele Battistini, 15, 00151 Rome, Italy
Tel. +39 0544 428444 | info@itare.it | www.itare.it